



Image: Manor Oak

EASY FIT  
FLOORING

# CRAFTSMAN

# CRAFTSMAN

## EASY FIT FLOORING

You may not have years to hone your craft, but with our range of easy fit flooring you will be able to achieve that perfect craftsman finish in any room.



We ensure your flooring lives up to our exacting standards making it worthy of the Craftsman name. So, all our flooring comes with a 20-year domestic and 10-year commercial warranty.

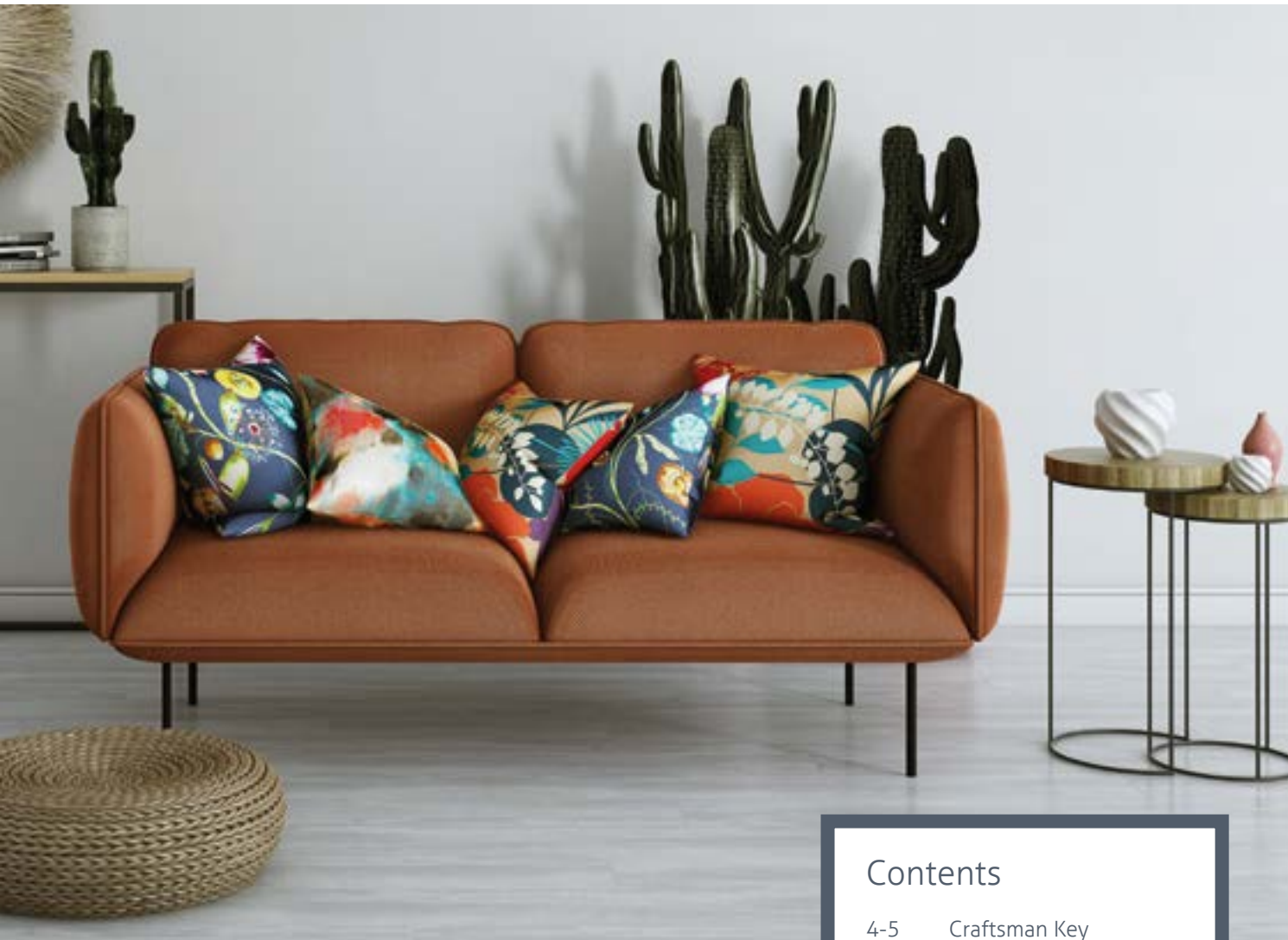
Longevity and performance guaranteed.

The click system makes installation easy, and the completed floor is immediately ready to walk on.

Our flooring isn't just hard wearing, it's easy to clean, antimicrobial, inhibits mould growth and is 100% waterproof. Giving you complete peace of mind.

*"We believe every home should be a home to be proud of - a Craftsman home."*





## Contents

- 4-5 Craftsman Key  
Features & Benefits
- 6-15 Wood Effect Planks
- 16-17 Stone Effect Tiles
- 18-19 Guide to Installation
- 20 Technical Information

# CRAFTSMAN

*We've got everything covered*

Hard-wearing and natural in colour Craftsman is the ideal choice for a modern home. It is 100% waterproof, highly practical and suitable for most living areas.\*

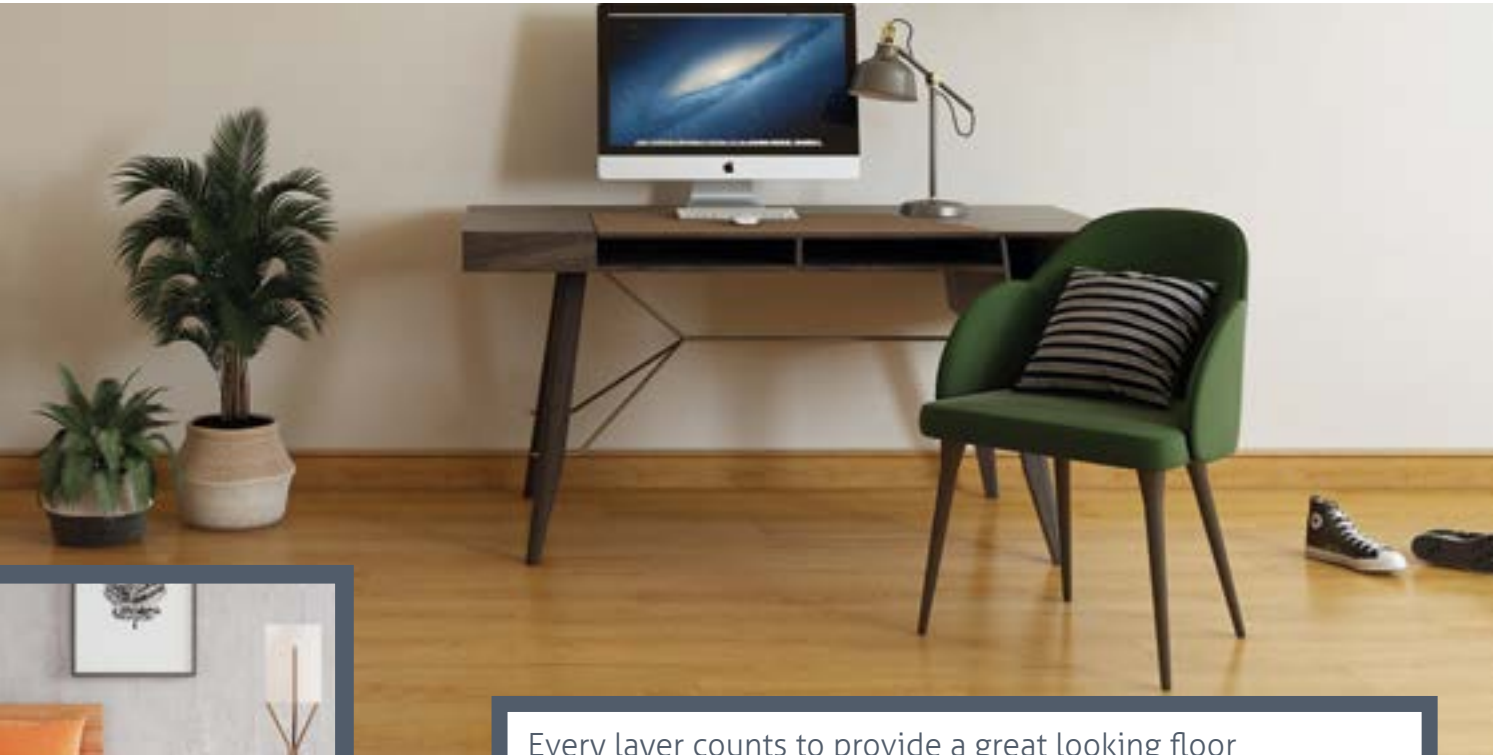
The 4-sided bevels of the planks emphasise the classic look and feel of a wooden or tiled floor. The I4F click system on the long edge plus push lock on the end (header) joint ensures quick and easy installation.



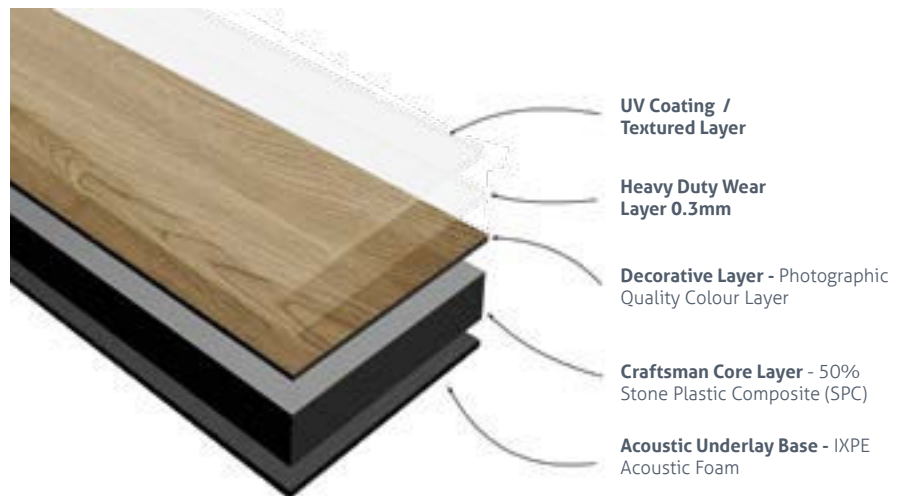
## Key Features & Benefits:

- 5mm thick vinyl flooring made from 50% stone SPC (stone plastic composite) making it very stable in fluctuating temperatures, so only requires a 5mm expansion gap.
- Impressive sound reduction of 21dB thanks to the built in IXPE acoustic foam underlay.
- Deep embossed wear layer of 0.3mm to deal with the heaviest of foot traffic.
- Soft to the touch, quiet and warm to walk on.
- Quick and easy to fit thanks to the click locking system making the floor instantly ready to walk on once installed.
- Can be laid on top of existing hard and level floor coverings saving time and installation cost.
- Suitable for installation over underfloor heating, max 27°C.\*
- Anti-microbial protection inhibits a wide range of bacterial and mould growth keeping you and your family safe.
- High slip resistance to help prevent accidents.
- 100% waterproof – Craftsman LVT is completely impervious to water and won't soak up water like laminate MDF or timber-based flooring products.
- Easy to clean.

*\*Can be used next to south facing bi-fold and patio doors provided a 5mm expansion gap is respected. Not suitable for use in showers or wet rooms or areas that can exceed 27°C such as conservatories.*



Every layer counts to provide a great looking floor that performs.





# CRAFTSMAN

## Titanium Oak

Product Code: **QAF-CFP-01**  
Plank Size: **178mm x 1218mm**  
Total Thickness: **5mm**  
m<sup>2</sup> Per Box: **2.17m<sup>2</sup>** (10 planks)  
Per Pallet: **121.5m<sup>2</sup>** (56 boxes)

WOOD PLANKS





# Vintage Chestnut

Product Code: **QAF-CFP-03**  
Plank Size: **178mm x 1218mm**  
Total Thickness: **5mm**  
m<sup>2</sup> Per Box: **2.17m<sup>2</sup>** (10 planks)  
Per Pallet: **121.5m<sup>2</sup>** (56 boxes)





# Winter Driftwood

Product Code: **QAF-CFP-05**  
Plank Size: **178mm x 1218mm**  
Total Thickness: **5mm**  
m<sup>2</sup> Per Box: **2.17m<sup>2</sup>** (10 planks)  
Per Pallet: **121.5m<sup>2</sup>** (56 boxes)





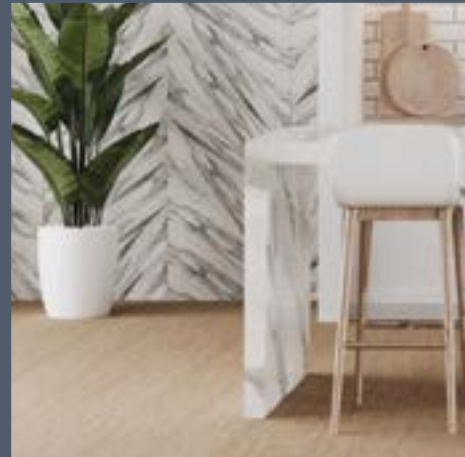
# Farmhouse Oak

Product Code: **QAF-CFP-06**  
Plank Size: **178mm x 1218mm**  
Total Thickness: **5mm**  
m<sup>2</sup> Per Box: **2.17m<sup>2</sup>** (10 planks)  
Per Pallet: **121.5m<sup>2</sup>** (56 boxes)



# Heritage Oak

Product Code: **QAF-CFP-08**  
Plank Size: **178mm x 1218mm**  
Total Thickness: **5mm**  
m<sup>2</sup> Per Box: **2.17m<sup>2</sup>** (10 planks)  
Per Pallet: **121.5m<sup>2</sup>** (56 boxes)



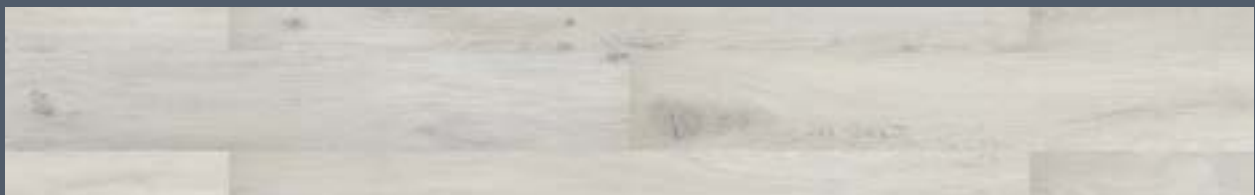
# Charred Elm

Product Code: **QAF-CFP-09**  
Plank Size: **178mm x 1218mm**  
Total Thickness: **5mm**  
m<sup>2</sup> Per Box: **2.17m<sup>2</sup>** (10 planks)  
Per Pallet: **121.5m<sup>2</sup>** (56 boxes)



# Alpine Oak

Product Code: **QAF-CFP-10**  
Plank Size: **178mm x 1218mm**  
Total Thickness: **5mm**  
m<sup>2</sup> Per Box: **2.17m<sup>2</sup>** (10 planks)  
Per Pallet: **121.5m<sup>2</sup>** (56 boxes)





## Scandi Oak

Product Code: **QAF-CFP-11**  
Plank Size: **178mm x 1218mm**  
Total Thickness: **5mm**  
m<sup>2</sup> Per Box: **2.17m<sup>2</sup>** (10 planks)  
Per Pallet: **121.5m<sup>2</sup>** (56 boxes)



**NEW  
COLOUR**



# Castle Oak

Product Code: **QAF-CFP-12**  
Plank Size: **178mm x 1218mm**  
Total Thickness: **5mm**  
m<sup>2</sup> Per Box: **2.17m<sup>2</sup>** (10 planks)  
Per Pallet: **121.5m<sup>2</sup>** (56 boxes)

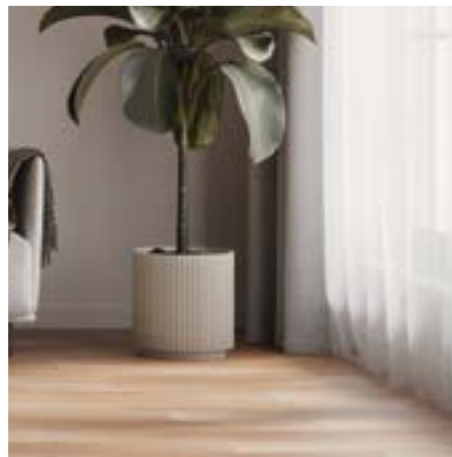


**NEW  
COLOUR**



# Manor Oak

Product Code: **QAF-CFP-13**  
Plank Size: **178mm x 1218mm**  
Total Thickness: **5mm**  
m<sup>2</sup> Per Box: **2.17m<sup>2</sup>** (10 planks)  
Per Pallet: **121.5m<sup>2</sup>** (56 boxes)



**NEW  
COLOUR**

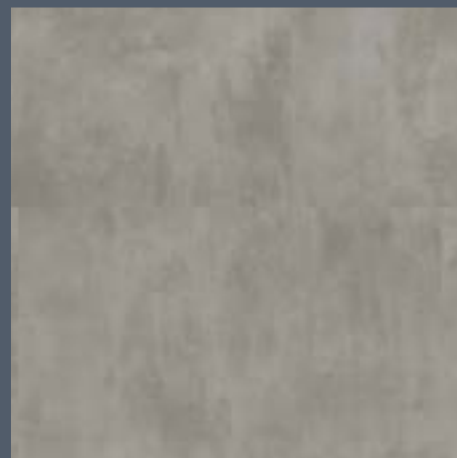


# CRAFTSMAN

## Alaska Grey

Product Code: **QAF-CFT-01**  
Tile Size: **305mm x 610mm**  
Total Thickness: **5mm**  
m<sup>2</sup> Per Box: **2.22m<sup>2</sup>** (12 tiles)  
Per Pallet: **119.88m<sup>2</sup>** (54 boxes)

STONE TILES





## Gotham Grey

Product Code: **QAF-CFT-02**  
Plank Size: **305mm x 610mm**  
Total Thickness: **5mm**  
m<sup>2</sup> Per Box: **2.22m<sup>2</sup>** (12 tiles)  
Per Pallet: **119.88m<sup>2</sup>** (54 boxes)



# CRAFTSMAN

## EASY FIT FLOORING

### How many packs of Craftsman do I need?

- Measure the width of the room at its widest point in metres.
- Measure the length of the room at its longest point in metres.
- Multiply the width and length measurements together.
- Add 10% to this number to allow for cutting mistakes or any damage to the planks or tiles.
- Divide the above number you have calculated by the coverage per m<sup>2</sup> of your chosen flooring, wood planks 2.17m<sup>2</sup> per pack or stone tiles 2.22m<sup>2</sup> per pack and round up to the nearest whole number or full pack. This is the amount of Craftsman flooring that you will need to purchase for your project.

The above methodology works well if your room is of a standard shape with only a few alcoves but if you have a more complex room shape with features such as bay windows, alcoves and chimney breasts, the trick is to break the room down into smaller square or rectangle sections.

Simply draw a rough sketch of the room on paper, then box off any alcoves or rooms leading off from the main floor area. Then use the width x length calculation method shown above for each section of the floor and add the total of each section together.

### Guide to Installing Craftsman

For the latest fitting instructions and Craftsman warranty information scan the QR code or visit [www.luvanto.com](http://www.luvanto.com).





The best way to enjoy your Craftsman flooring is to have it installed by a professional installer. However, should you wish to install it yourself, please use the easy-to-follow guide below. This guide is only an overview. Always refer to the detailed fitting instructions contained within each pack of Craftsman Flooring as incorrect fitting may affect the warranty of your flooring.



As a minimum, to install Craftsman flooring you will require a Stanley knife, tape measure, rubber mallet and a pencil. If you use a professional flooring installer, he will have all the right tools for the job.



A 5mm expansion gap is needed around the entire perimeter of the flooring. You may wish to remove the skirting boards and replace after installation or use Scotia beading to cover the expansion gap. In this instance we have removed the skirting boards.



Make sure your flooring is level. If your floor is too uneven the locking system will not hold the flooring together. The quickest and easiest way is to use Jumpax Basic (visit [www.luvanto.com](http://www.luvanto.com) for more information) as shown. If you are unsure, please consult our detailed fitting instructions contained in every box or a professional installer who will advise if the subfloor is suitable.



Measure from wall to wall and ensure that you start installing in a logical place to minimise any cut planks to the perimeter of the installation. Mark a "starting line" on the floor with your pencil. Ensure that you include the 5mm expansion gap when measuring. More information in the detailed fitting instructions in each box.



When planning where to start from, ensure that you stagger the joints on each row. There should be at least a 1/3rd of a plank or tile length between each end joint. Do not have all the joints running in a line.



Start the installation by angling each plank into the click locking system along the long ends and then lay each plank flat to the floor. The long ends have a click lock system to hold each plank in place. The short ends have a drop lock system. More details in the detailed fitting instructions.



Once you have positioned each "short end" into place, gently tap the top surface of the plank using a rubber mallet (from a height of approx 10cm above the surface) to engage locking system. The surfaces of the planks should be perfectly flush after tapping down. Do not use extra force and never use a solid tool such as a metal hammer as this could cause damage to the joint.



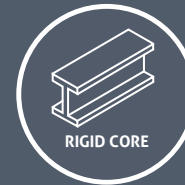
Now your floor is fully installed, you can replace your skirting boards. Be careful not to fully trap the flooring as it needs to be able to expand and contract freely. Usually 1-2mm is enough to allow this to happen. If you left the skirting boards on, then use Scotia beading to cover your 5mm expansion gap. Never use any type of filler to cover your expansion gap.



Give your flooring a good clean down and it can be walked on straight away. Using a professional cleaning kit like the Luvanto Luxury Cleaning Kit (see [www.luvanto.com](http://www.luvanto.com) for more information) is the best option to ensure you can enjoy your new flooring for years to come.

# CRAFTSMAN

## EASY FIT FLOORING



### Luvanto - QA Flooring Solutions

Unit 2, Hurricane Drive, Liverpool, L24 8RL.

Tel: 0151 427 6000

Email: [sales@luvanto.com](mailto:sales@luvanto.com)

[www.luvanto.com](http://www.luvanto.com)